


## Notebook Travel Surge Protector

Thank you for choosing the Belkin Notebook Travel Surge Protector (the Travel Surge Protector) for your mobile computer power protection needs. Your Notebook Travel Surge Protector safeguards your laptop from power imbalances as you travel, in both domestic and international venues. Please read the general instructions and safety information provided below for both Notebook Travel Surge Protector models: F5C791-C6 and F5C791-C8. File in a safe place for future reference.

### Over-Current Detection Test (Fig. A)


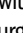
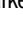
1. Pull one end from the retractable 7 ft. phone cable and plug it into the telephone wall jack. Take the other end and plug it into the Travel Surge Protector jack marked with the  icon.
2. Depress the test button. If red indicator light turns on, an over-current exists and may damage your modem device or cause a malfunction. **IMPORTANT: IF THE RED LIGHT IS ON, DO NOT PLUG EQUIPMENT INTO THIS JACK.** Seek a different phone jack or retest the same jack at a later time. If the red light remains off, the line is OK and ready for safe use.

### AC Line Installation (Fig. B)

Please verify that your laptop and telephone line are functioning properly before you install the Travel Surge Protector. It easily connects in-line between the laptop power adapter and the adapter power cord.

1. Unplug the power cord from the power adapter.
2. Plug power adapter cord into the female end of the Travel Surge Protector.
3. Plug the male end of the Travel Surge Protector cord into the power adapter.

### Telephone/Modem Installation (Fig. C)

1. Plug one end of the phone cable into the telephone wall jack and the other end into the Travel Surge Protector jack marked with the  icon.
2. Plug the cord from the telephone into the Travel Surge Protector jack marked with the  icon.
3. Pull one end from the retractable 7 ft. phone cable and plug into the Travel Surge Protector jack marked with the  icon and plug the other end into your laptop.

The "Protected" light should be illuminated during use. If this light goes out at any time while in use, your Travel Surge Protector has sacrificed itself to protect your equipment and should be replaced. Please contact Belkin Corporation for a free replacement Travel Surge Protector.

### Safety Information

This unit is designed for use in countries with 100VAC-240VAC electrical utilities. Use in some countries may require a plug adapter.

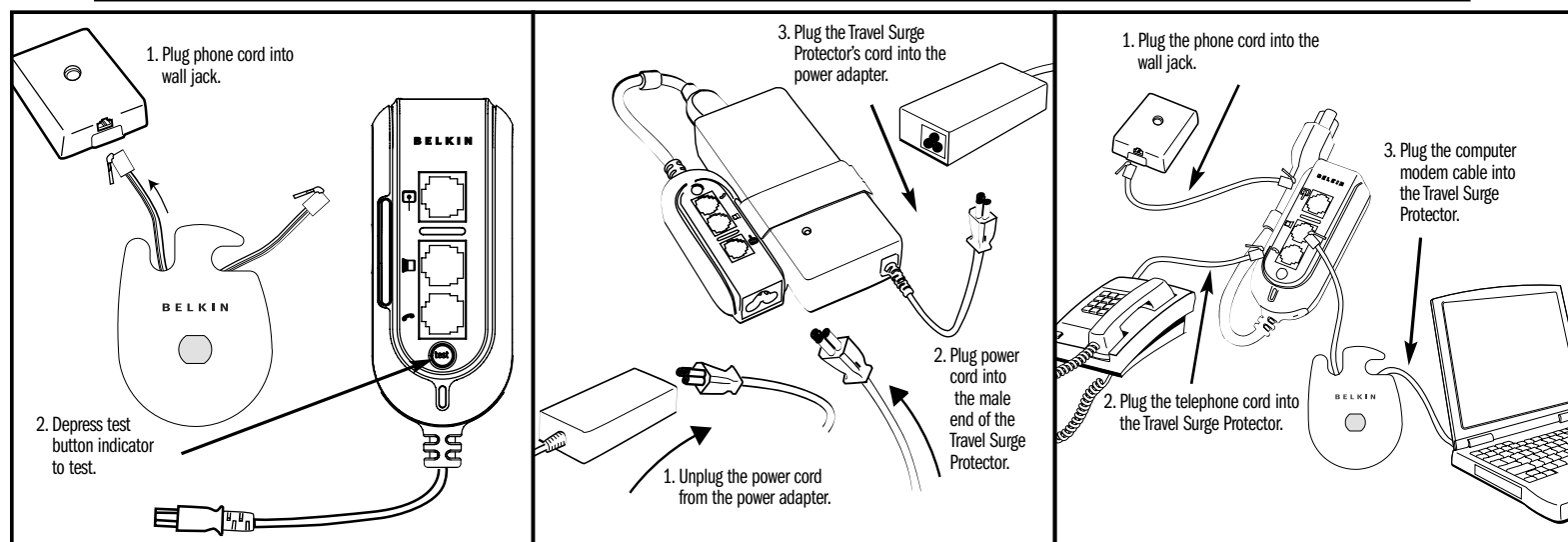
Not for use with telephone ISDN or digital telephone lines.

Prior to installing unit, turn off and unplug all intended protected equipment.

For use in dry environments only. For absolute protection, do not use ELECTRIC equipment during an electrical storm.

Specifications	
Plug Type	C6 Connector or C8 Connector*
C6 Connector	100VAC-240VAC AC 50/60Hz
UL Suppressed Voltage Rating LN	<800 Volts at 220VAC-240VAC
Surge Entry Capacity @ 8/20uS	238 Joules at 220VAC-240VAC
Phone Protection	Solid State Phone Protection
Peak Surge Current @ 8/20uS	6500 Amps
Telephone Breakover Voltage	275VAC
Over-Current Detection Indicator	Yes
Phone Cable	Includes 7' Retractable RJ11 Cable
Agency Approvals	UL, cUL and FCC
Warranty	Lifetime Product Warranty
Connected Warranty	\$75,000 Life

\*C6 Connector 3-Prong, C8 Connector 2-Prong



**Figure A**

**Figure B**

**Figure C**